



Natina stands out with its exceptional features:

- ✓ Earthy, **rustic brown** finish.
- ✓ Unparalleled **rust protection** from galvanized steel.
- ✓ **Environmentally-friendly** solution that is safe around wildlife and plants.

**Project Name:**  
Virginia Lattice Tower

**Materials applied with Natina:**  
All galvanized lattice tower frames and hardware. Natina-treated towers are in the middle of this photo.

## Blending Aesthetics and Functionality in Virginia's Lattice Towers

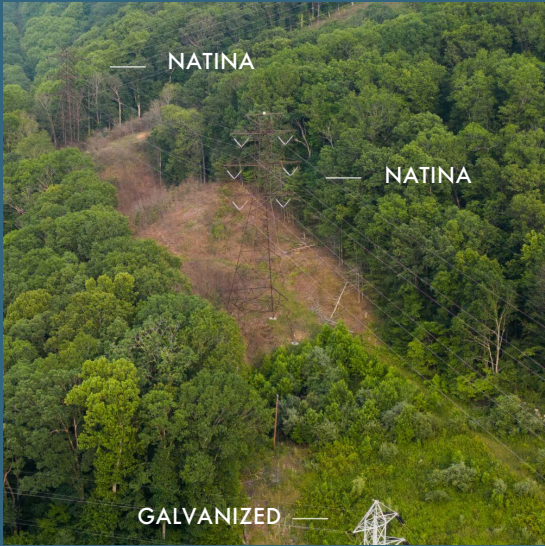
Natina specializes in seamlessly integrating functionality and aesthetic appeal. Our project in Virginia transformed over 50 lattice towers using our innovative Steel Color Solution, reducing their visual impact while maintaining functionality. Our natural reactive color process blended the transmissions towers with the lush green backdrop of Virginia. Natina bridged the infrastructure requirements of the power company with the landscape aesthetics criteria.

Natina is a committed eco-friendly color solutions manufacturer



Natina lattice towers effortlessly blend into Virginia's landscape.

and contractor, ensuring your project goals are achieved. Experience the transformative power of our Natina approach and contact us today to redefine your perception of seamless integration.



**Don't miss this close-up from the the photo above.** It captures how Natina perfectly blends into the lush environment. In the photo above, all the lattice tower frames and hardware have been treated with Natina, except for the silver tower in the lower middle.

To help your next project or to schedule a webinar, connect with us today.

866-797-6589 | [info@natina.com](mailto:info@natina.com) | [www.natina.com](http://www.natina.com)

